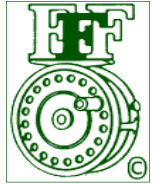




The Barbless Flyer



Spokane Fly Fishers

www.spokaneflyfishers.com

February, 2011



FEBRUARY MEETING AND CLASS FEBRUARY 9TH PHIL ROWLEY "TACTICS FOR TOUGH DAYS"

If you've ever had to say "I got skunked" when asked how was the fishing at the lake today, then don't miss the February 9th meeting. Phil Rowley will be the speaker and the subject is "Tactics for Tough Days"

For over 20 years Phil has been fly fishing stillwaters almost exclusively. His love of Stillwater fly fishing has taken him all over British Columbia and Washington in the pursuit of trout and char.

Rowley has written for almost every major fly fishing publication in North America. His contributions also include books. Many of you are familiar with his *Fly Patterns for Stillwaters*, which has become a best seller. As a compliment Phil has released *Stillwater Solutions Recipes Volume 1*, co authored with long time friend Brian Chan. He also has a number of DVDs to his credit.

When not on the water or tying Phil travels and teaches seminars, speaks to fly fishing clubs and conducts fly fishing schools. He has appeared as a host on the New Fly Fisher, a television production dedicated to fly fisher education.

In early 2004 Phil along with Brian Chan released a signature line of fly tying materials christened Stillwater Solutions. Phil will be offering a fly tying class the afternoon of the 9th. He is donating all the tying materials. This would be a good opportunity to check out the Stillwater Solutions line.

The evening presentation of the 9th promises to be a good one, providing answers that will help us eliminate some of those "Skunked Days".

TYING CLASS BY PHIL ROWLEY

The class will be from 12:30 to 3:30 Wednesday, February 9th at the Wildlife Council Building at 6116 N. Market. All tying materials are being provided by Phil Rowley, just bring your tying tools, vise and spooled materials such as thread and wire. The cost is \$20. Written tying instructions will be provided. Space is limited. Call Judy 924-9462 to sign up.

OFFICERS AND BOARD MEMBERS

President	Mike Berube
Vice President	Kurt Tempel
Treasurer	Gale Allen
Secretary	Bob Kowal
Board Position 1	Gail Bailey
Board Position 2	Klaus Rissmann
Board Position 3	Dan Wight
Past President	Mike Melmoth
Sgt. At Arms	

Contact us at:
P. O. Box 4141
Spokane, WA 99220
Or
sffishers@comcast.net

COMMITTEE CHAIRMEN

Programs:	Kurt Tempel
Barbless Flyer Editor:	Linda Howe
Conservation:	Mike Keegan
Outings	Don Tietz
Membership	Mary Kovatch
Fly Fishing School:	Mike Melmoth
Librarian:	Robert Stock
Project Healing Waters:	Tim Reed
FFF Liaison:	Dan Ferguson
Beg. Fly Tying:	Betty Smith-Lambert
Int. Fly Tying:	Dan Ferguson
Club Chef:	Carla Ferguson
Volunteer Coordinator:	Judy Kaufman

AROUND THE BEND

February 9th, SFF Meeting
7 PM PHIL ROWLEY

February 16th. SFF Board
Meeting, 6:30 PM

March 9th, SFF Meeting
CONSERVATION RAFFLE
7 PM

March 16th, SFF Board
Meeting 6:30 PM



PREZ SEZ

By: Mike Berube

Hello Everyone. I hope the chilly and snowy weather isn't getting you down. There are still some fishing opportunities for you, the North Fork of the Coeur D'Alene River and Rocky Ford Creek come to mind. A little bit of a ride to both but if you need a fishing fix, go for it. If you don't want to brave the cold temps, hang in there, get to tying, fill your fly boxes and get ready for the club's first outing in March. Not too far off when you think about it.

Speaking of tying, the club's beginners and intermediate fly tying classes are in progress. I haven't heard a report from the beginners class but I can tell you that the intermediate class is a good time. The instructors are doing a great job and with the relaxed atmosphere everyone seems to be having fun and learning to tie some new patterns in the process. Dan Ferguson really put a good program together. Thanks Dan!

I was extremely pleased at the attendance at our January meeting, where Pat Dorsey gave an awesome presentation on fishing tailwaters. If you had the chance to attend his fly tying class in the afternoon you learned not only some new patterns but you learned how to use them.

This month's speaker, Phil Rowley should be just as impressive. He'll share with us his vast knowledge on fishing stillwaters. From equipment to bugs to locations, and with stillwater season a few months away you don't want to miss this one. He'll also have a fly tying seminar, see the article on him in this and the January Barbless for more information.

Hopefully you've had a chance to read the "Spotlight" column by Felix Hernandez. Showcasing our club members is an awesome idea, we really do have a great amount of talent and knowledge. Thanks Felix.

I'm going to close this with a reminder about the Conservation Raffle at our March meeting. It will be a good chance to win some great fishing items. Proceeds from this raffle go to the club's conservation efforts. We recently teamed with Trout Unlimited Spokane River Chapter to assist funding Trout In The Classroom. This program will allow 4 local middle school science classrooms to "raise" fish in their school and release them into the wild. Contact our Conservation Chairman Mike Keegan or club members Bill Abrahamse and Harvey Morrison for more information or to get involved.

I hope to see you at this month's meeting and maybe at Phil's tying seminar.

MEMBERSHIP

Mary Kovatch, Chair

Please welcome the following new members to the Club. They are:

Paul Guemmer, Cyndi Guemmer, Ivan Kletka (who is rejoining after a long absence), Pete Reynolds and Betsy Reynolds (who are also rejoining).

CONSERVATION RAFFLE - MARCH 9, 2011

The club's annual Conservation Raffle will be held at our March 9th meeting. Mike Keegan, our Conservation Chairman, has agreed to chair this event. For this wonderful program, we contact local fly fishing and sporting goods store and ask for donations. We also ask you, our members, to donate new or gently used items and/or services which can be raffled off for this good cause. Last year's raffle included many fishing trips, books, flies, tying materials and a lot of fishing items. We even had a pontoon boat. If you have items to donate, please call the people below to arrange to drop your item off:



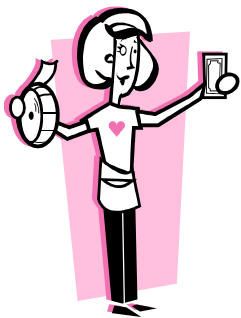
Northside:	Dan Ferguson	325-8885
Southside:	Fred Howe	448-4707
Southwest:	Mike Keegan	455-4433
Valley:	Judy Kaufman	924-9462

We will also be accepting items at the February meeting. Those who get their donations in early, by February 25th, will be eligible for a special drawing as was the case last year when a \$50 gift card was the prize.

The actual raffle begins by members purchasing tickets and then dropping them into bags representing each item. You can put your tickets in separate bags for a chance at winning many items or, if you wish, load up one bucket to increase your chances of winning something that you REALLY want.

This is a marvelous money maker for the club. It provides the funds for our conservation projects and it is a wonderfully fun meeting. This year, the money is being used for Trout in the Classroom and we have committed to helping WDFW with a pond net for the hatchery.

ADVANCE CONSERVATION RAFFLE TICKETS AVAILABLE:



Advance Conservation Raffle Tickets will be sold at the February Meeting (to avoid the long lines at the March meeting). The cost for tickets will be the same as for last year (\$1 for one, \$5 for seven, and \$10 for 15). Make your donation and save time at the Conservation Raffle. The advance purchase will record your raffle number and will allow you to pickup your pre-paid raffle tickets at the raffle at the March meeting. You will then be ready to place your raffle tickets for the raffle drawings of your choice." Visa and MasterCard will be accepted for presales and in March.

Also, we are looking for volunteers for various jobs. Signup sheets will be at the February meeting with a list of opportunities. Your help is appreciated.

You may call the chairperson, Mike Keegan, at 455-4433, with any question

WESTSLOPE FLY SHOP
Jesse Clark
 1101 E Trent Ave
 Spokane, WA 99202
 (509) 838-0252
 www.westslope-flyshop.com
 Jesse-westslope-flyshop.com
 Federation of Fly Fishers Certified Casting Instructor

silver bow
 sean visintainer
 13210 e indiana ave, spokane, wa 99216
 tel 509 924 9998 fax 509 924 9080
 www.silverbowflyshop.com

Swede's Fly Shop
*A full service fly shop
 Superior quality tying materials*
 1611 N. Ash
 Spokane, WA 99205
 509-323-0500
 Allen Peterson
 swedesfs@comcast.net



SFF FLY FISHING SCHOOL

There is still space in the Fishing School for 2011. Remember, the classes begin on March 10 and continue for eight Thursday evenings, with three casting classes and two pontoon (on the water) safety classes. This is a wonderful opportunity to improve your skill. You will learn about equipment, how to tie knots to assemble your line and attach flies, where and how to fish in still or moving waters, entomology (bugs lives and how to fish them), and a new addition to the class, pontoon safety. This is indeed the best buy in town. As an SFF member your charge is only \$60. The non-member fee is \$100 and includes a 15 month membership in the club.

Please give Mike Melmoth a call at 468-4894 to register for the class or if you have any questions.

CONSERVATION CORNER

By: Mike Keegan

TROUT IN THE CLASSROOM

This program is being partially funded by Conservation funds from Spokane Fly Fishers. The eggs were delivered to the classroom on Friday, January 7th. April 28th is set for the stocking date. Four schools are involved in this program.

Later, when the volunteer roles are defined, we will have a signup sheet.

2011 NORTHWEST YOUTH CONSERVATION & FLY FISHING ACADEMY

This will be held at Hicks Lake in Lacey, WA from June 19 thru June 25. It is sponsored by the Washington Council of Trout Unlimited and the Washington State Federation of Fly Fishers. It is directed to youths in the 12-16 age range and is co-educational. Classes include fly casting, fly tying, knot tying, reading water, safety, macroinvertebrate sampling, and fly fishing.

So get your children, grandchildren, friends, etc. to apply

Application forms will be available at the regular meetings until April along with a description of the activities and topics. The club is supporting a \$275 scholarship which includes food and lodging. A recommendation from a teacher is required. The application deadline is April 15th.

Contact Mike Keegan (455-4433) or Dan Ferguson (325-8885) for information.

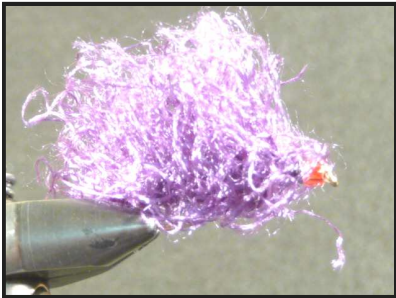
WEST BRANCH LITTLE SPOKANE RIVER WILDLIFE AREA

The wildlife area is 35 north of Spokane between Horseshoe and Fan Lake. Kurt Tempel, Mike Berube, Dan Ferguson, and Mike Keegan have visited the area. Mike Keegan will be on the advisory group for planning. Items to be covered are a water quality appraisal and a fisheries survey in addition to input on regulations. There is about 5 miles of the river open to public fishing. The stream flow is year-round. It has lots of gravel on the bottom and it is wade-able.

**NOTES FROM A SELDOM SEEN MEMBER
PART 2 OF A SERIES
SPOTLIGHT ON SFF MEMBER KURT TEMPEL
By Felix Martinez**

Kurt Tempel tied Bob Mielbrecht's Cha-Cha Leeches to donate to the 2010 SFF Annual Fly Auction Fundraiser. These flies sound like a routine on Dancing With The Stars.

My wife, Jan, has curly hair and calls Cha-Cha Leeches her "Curly-Haired Friends".



Kurt tied these patterns on size 8 hooks, weighted with 10-12 wraps of lead wire, in brown, black, and purple. Kurt wants to be sure that everyone knows that he learned to tie this pattern from club member Bob Mielbrecht.

This is Kurt's go-to pattern on rivers and lakes around Spokane and elsewhere.

Cha Cha is a type of very fuzzy, highly durable yarn popular with knitters to make sweaters, scarves, and hats. It used to be available at Michael's craft store, but now is hard to find, even on the Internet.

Kurt's favorite Cha Cha Colors are brown, black, and purple.

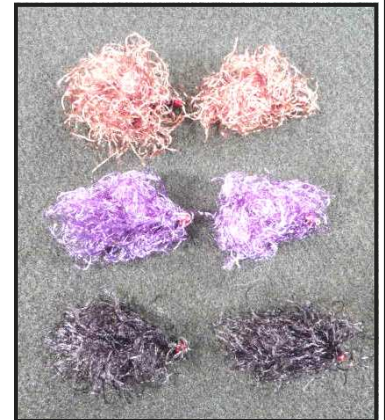
In lakes, Kurt fishes these on a sink-tip line and five feet of monofilament leader. Allow time to sink before retrieving in short jerks. Hang on.

In the Spokane River, Kurt Chas upstream, allowing the fly to sink while stripping in slack and then raising his rod tip as necessary to allow the fly to tick along the bottom. Because the fly is heavy, Kurt warns that you will lose a few.

Kurt is retired from the Air Force and is originally from Northern California. He began fishing at age 5 with a Mitchell reel and rod given to him by his father. While in college at San Jose State, he took a fly fishing course from someone who was a guide on Montana's Madison River. After the course, he was hooked. Years later, that same instructor ended up guiding Kurt and his father on a trip they took on the Madison.

Kurt has lived in Spokane since 1998 and fishes year round. He likes fishing on the Spokane River in winter months and on the North Fork of the Coeur D'Alene River during warmer months. Since he also bird hunts, he divides his time on the water with field trips with his dog.

Picture of Kurt at Omak Lake with a Lahontan Cutthroat.



2011 OUTINGS SCHEDULE

Chairman: Don Tietz

DATE	OUTING	HOST	RATING/EXPLANATION
3/19	Coffeepot Lake	Judy Kaufman	1: Could be cold and windy
3/26	Amber Lake	NEED HOST	1
4/9-4/10	Clarkfork	Don Tietz	2: Float: Bridge abutments Small rapids, obstacles
4/16-4/17	McGinnis Lake	NEED HOST	1
4/30	Pontoon Safety Still Water Class at Medical Lake		1
5/7	One Fly Contest West Medical Lake	Dan Wight	1
TBA	Kid's Fishing Day	(Timing of this may necessitate moving other outings)	
5/18	Badger Lake	Mike Berube	1
5/21-5/22	Bailey/McDowell	NEED HOST	1
6/2-6/5	Kamloops Area Lakes	J. Kaufman, Mike Berube	1
6/8	Williams Lake	NEED HOST	1
6/11	Conservation Outing	Mike Keegan	
6/18-6/19	Grande Rhonde	Carolyn Sells	4: Wade: slick rocks, boulders, visibility. 4: Float: Low fast water, Obstacles
6/18-6/19	N. Fork of CDA	Mike Melmoth	2; Wading
6/25-6/26	Blackfoot River	Carolyn Sells	3: Float: obstacles, sweepers
6/25	Coffeepot Lake	NEED HOST	1
7/8-7/10	Georgetown Lake	Gale Allen	1
7/16	Spokane River	Judy Kaufman	3: Float: rapids, obstacles, Sweepers 3: Wade: slick
7/22-7/24	Kelly Creek	NEED HOST	3: Wade: access, slick
8/5-8/7	St. Joe River	Dan & Carla	1-3 Wade: some locations
8/20-8/21	Kootenai River	Dan Wight	2-3 Float: rapids
9/10-9/11	Clark Fork River	NEED HOST	2: Float: bridge abutments, Small rapids, obstacles
9/16-9/18	Missouri River	Carolyn Sells	2: Float: obstacles
10/1	Spokane River	J. Kaufman/T. Reed	3: Float: rapids, obstacles, Sweepers 3: Wade: slick
10/15/10/16	Grande Rhonde	Carolyn Sells	4: Wade: slick rocks, Boulders, visibility 4: Float: Low fast water, Obstacles.

Please read the explanation of outing ratings on the following page.

Some of the outings listed above need hosts. If you can be of assistance, please call the Outings Chairman, Don Tietz, at 292-8292.

OUTING RATINGS

LEVEL	TYPE	RATINGS DESCRIPTION
1	Water: Operator:	Still water, easy access, may have windy conditions Rookie to expert, First time pontoon/drift boat owners should start here. Float Tubes okay here only.
2	Water: Operator:	Still water: limited access/River. Comfortable current, some obstacles and small rapids, easy wade. Level 1 accomplished, First river outing with experienced mentor.
3	Water: Operator:	Still Water: difficult access. River: Float, faster water, obstacles, rapids, sweepers. Wade: Difficult access, fast, slick rocks. Level 2 accomplished and mastered. Good boat handling skills, can read water and react.
4	Water: Operator:	River: Faster water, changing conditions, heavy rapids, obstacles, braids, strong hydraulics, sweepers. Level 3 accomplished and mastered. Excellent boat handling skills, can read river quickly and respond.
5	Water: Operator:	River: Complex water, changing hydraulics and river path. Complex rapids, falls, scouting recommended. Expert boat handler with a lot of experience in complex hydraulic situations. Must be able to read and react immediately and correctly.

IMPORTANT NOTE

Each time a boat operator enters a new level for the first time it is recommended they go with an experienced mentor at that level.

MENTORS.....

When signing up for outings note the rating assigned to the waters. If you have any questions about the waters and the rating, contact the host of the outing or the outings committee chairman (Don Tietz—292-8292). A mentor can be provided to aid in negotiating new waters and help to make your outing experience enjoyable.

The Bertsch Mackenzie Group
Roger B. Bertsch, CIMA®, CFM
 Vice President
 Wealth Management Advisor
 PIA Program Portfolio Manager

Global Wealth Management
 601 W. Riverside Avenue
 Suite 300
 Spokane, WA 99201
 T 509 458 4213
 T 866 458 4213
 F 509 590 4551
 roger_bertsch@ml.com
 http://fa.ml.com/spokane



14014 East Indiana Avenue · Spokane Valley, WA 99216
 phone (509) 891-1900 · fax (509) 891-1901

IDAHO FLY FISHING CO.

46946 St. Joe River Rd.
 P.O. Box 35
 Avery, Idaho 83802

mott8849@yahoo.com
 www.IdahoFlyFishingCo.com



Dan Mottern
 Beth Mottern



WORLD'S FOREMOST OUTFITTER®

Hunting • Fishing • Outdoor Gear

THE BARBLESS FLYER

**Spokane Fly Fishers
P. O. Box 4141
Spokane, WA 99220**

RETURN SERVICE REQUESTED

PLEASE REMEMBER TO BRING YOUR NAME TAGS TO THE MEETING

NEXT MEETING

FEBRUARY 9, 2011

PHIL ROWLEY

“TACTICS FOR TOUGH DAYS”

7:00 PM

ST. FRANCIS SCHOOL

1104 W. HEROY

“THE MISSION OF THE SPOKANE FLY FISHERS IS TO PROVIDE A FAMILY FRIENDLY ORGANIZATION FOR PROMOTING THE SPORT OF FLY FISHING THROUGH EDUCATION, APPLICATION, AND CONSERVATION.”